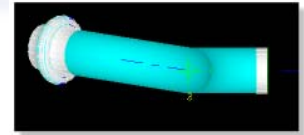
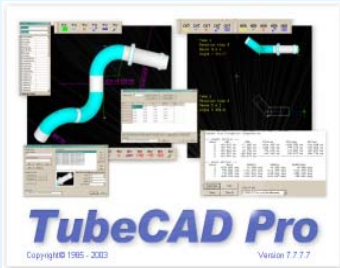


*Introducing the New TubeCAD Pro –*  
The super-charged upgrade that you've been waiting for!  
Get more info and download a free demo copy from the web.  
Log on at: [www.advancedtubular.com/tcadpro\\_news.htm](http://www.advancedtubular.com/tcadpro_news.htm)



## TubeCAD Professional for Windows was rewritten specifically for 32 bit Windows

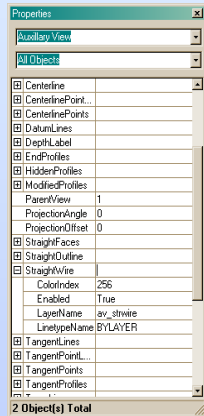
Now that TubeCAD Pro is windows-based, you can use long filenames, resize and view graphics with the power of Open GL, and use 3-D input from devices like MicroScribe. The old memory limitations are gone!



## New - Property Inspector

ModifiedProfiles	
ParentView	1
ProjectionAngle	0
ProjectionOffset	0
StraightFaces	
StraightOutline	
StraightWire	
ColorIndex	256
Enabled	True
LayerName	av_stwire
LinetypeName	BYLAYER

The new **Property Inspector** is new and powerful on-screen tool for changing hundreds of layout properties quickly.



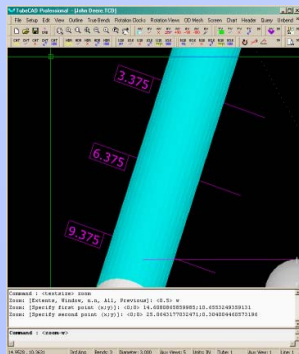
It responds to on-screen selections like this:

- Select the object or objects on the screen (like a true bend view)
- Right click to show a pop-up context menu
- Select "Properties" in the menu
- Edit any of the true bend view setup values in the editor that appears on top.

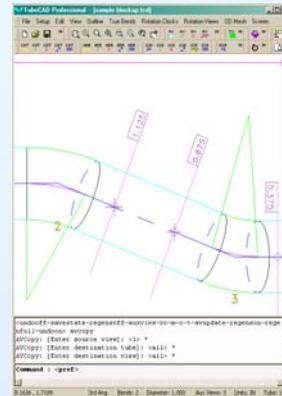
## New - Block-Up Style & Unlimited Block-ups Per Straight

A new enhanced style of block-up labels is included in addition to the classic style.

Also an unlimited number of block-up labels per straight can be switched ON. (TubeCAD used to only allow one per straight. That limitation is gone!)



## New – Automatic Block-Up Label Placement

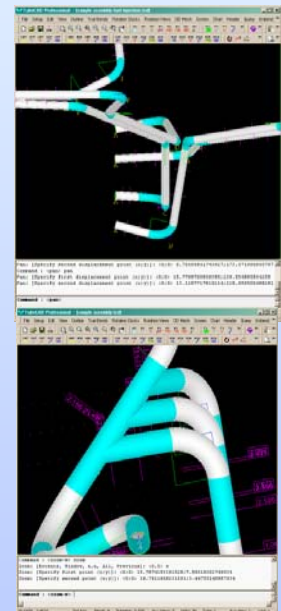


Block-up labels are now smarter. They have built-in intelligence that allows them to seek the position along a straight where the distance to the work surface is a *nominal* value. You control the interval size from one nominal value to the next (like every ten millimeters)

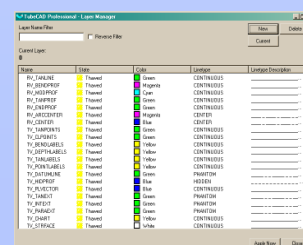
## New True Assembly with Unlimited Number of Tubes and Points

Enter *any number* of tubes into one layout *inside* the General Specs Menu. No more memory limitations that were imposed by the DOS version of TubeCAD.

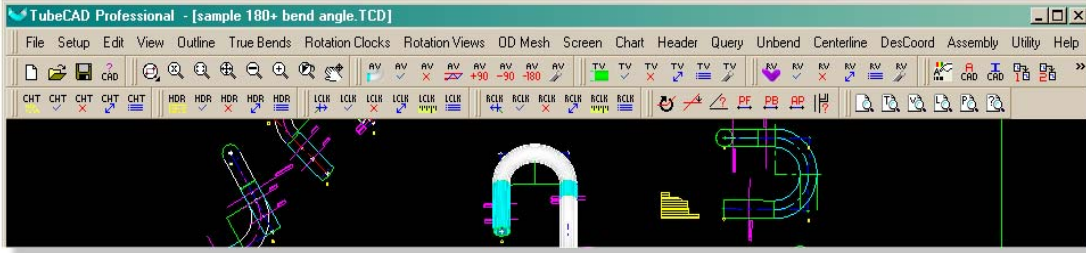
Try this for power: If you enter the coordinates for 5 tubes each with 50 bends, TubeCAD will automatically and parametrically create 250 true bends and 245 rotation views in a few seconds.



## New - Full Layer Control



TubeCAD Pro allows you to control the organization of layers. Use one layer for all entities or organize the layers any way you want.



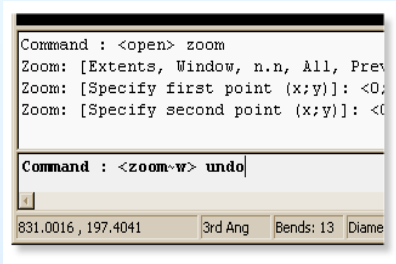
New floating toolbars make using TubeCAD even easier to use.

They are completely configurable. You can even add your own custom toolbars!

## New - UNDO and REDO Commands

TubeCAD Pro allows you to undo any number of commands.

You can even control the undo and redo limits in Preferences.



## New - Network License Manager



We developed a brand-new NLM (Network License Manager) package that is easier to install and maintain than in previous versions of TubeCAD. The new NLM also creates these new benefits:

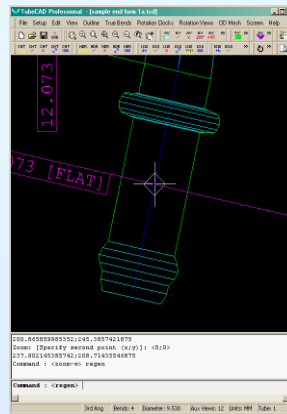
- The old 5-license minimum requirement is removed. One license is enough!
- There is no more need to replace hardware keys when you want to upgrade to a network site license.
- Manage a variety of our software packages at your entire site with a single Network License Manager.

## New - Color Control

TubeCAD Pro allows you to use CAD-style color charts to set the entity colors. These colors are mapped so they are AutoCAD – compatible.



## New - Tube Forms and Hidden Geometry in OD Outlines along with True Views



TubeCAD Pro draws tube modifications in any OD mode – even in outlines. In fact, OD outlines or meshes with tube modifications can now be displayed in any view.

This means that even TRUE BEND and TRUE ROTATION VIEWS can show end-forms.

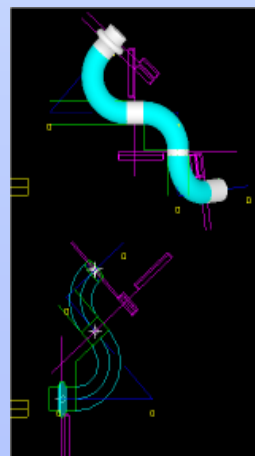
## New - Font Types Using True Type

TubeCAD now uses True Type Windows fonts in the charts on the layout.

The new **Style** command allows you to pre-define TEXT STYLES using True Type Fonts.



## New - Independently-Controlled Views New - Attach Tubes to Other Tubes



Setup each view independently, or control them as a group. This means that you can now show one view with OD outlines while another view shows the OD with surface shading.

This independent control includes every view of the tube – including both true bend and rotation views.

TubeCAD also allows you to attach any tube to any other tube. When the primary tube rotates, then the attached tube also rotates.